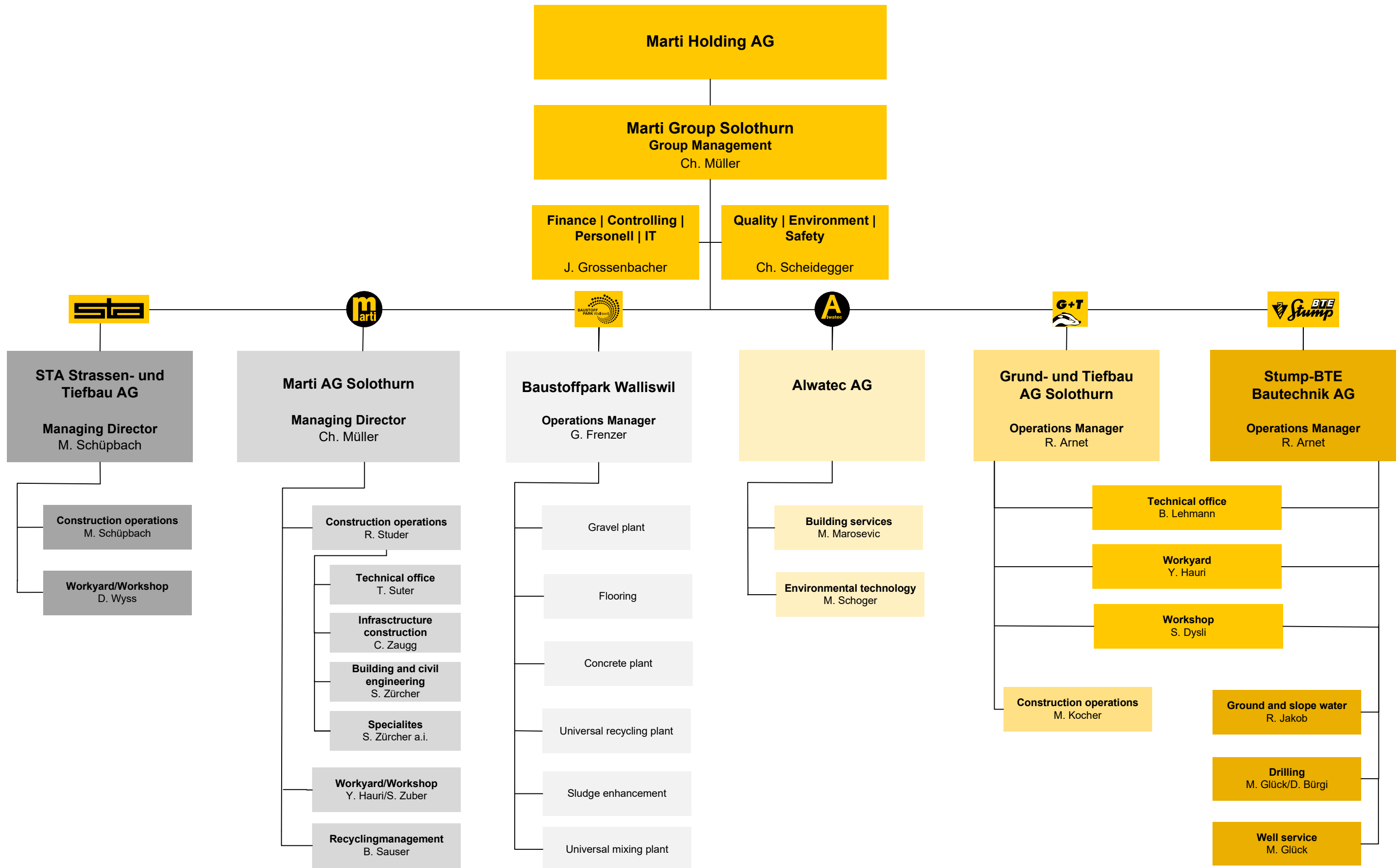


Organizational Chart Marti Group Solothurn



Marti Holding AG

Marti Group Solothurn
Group Management
Ch. Müller

Finance | Controlling |
Personell | IT
J. Grossenbacher

Quality | Environment |
Safety
Ch. Scheidegger



STA Strassen- und Tiefbau AG
Managing Director
M. Schüpbach

Marti AG Solothurn
Managing Director
Ch. Müller

Baustoffpark Walliswil
Operations Manager
G. Frenzer

Alwatec AG

Grund- und Tiefbau AG Solothurn
Operations Manager
R. Arnet

Stump-BTE Bautechnik AG
Operations Manager
R. Arnet

Construction operations
M. Schüpbach

Workyard/Workshop
D. Wyss

Construction operations
R. Studer

Technical office
T. Suter

Infrastructure construction
C. Zaugg

Building and civil engineering
S. Zürcher

Specialites
S. Zürcher a.i.

Workyard/Workshop
Y. Hauri/S. Zuber

Recyclingmanagement
B. Sauser

Gravel plant

Flooring

Concrete plant

Universal recycling plant

Sludge enhancement

Universal mixing plant

Building services
M. Marosevic

Environmental technology
M. Schoger

Technical office
B. Lehmann

Workyard
Y. Hauri

Workshop
S. Dysli

Construction operations
M. Kocher

Ground and slope water
R. Jakob

Drilling
M. Glück/D. Bürgi

Well service
M. Glück